

Toray Industries, Inc.
Chiba Plant2-1
Chigusa Kaigan, Ichihara-Shi
Chiba-Ken 299-01 Japan
Tel : 0436 (23) 0659
Fax : 0436 (23) 0658

TO : Whom it may concern,
From : **Kazuhiko Kominami**
Quality Assuaranse Section
Date : July 17, 2007

Dear Customer,

Declaration of Chemical Substances for MABS Resin "Toyolac"

Please be informed that any chemical substances listed in table A are not used in our process in an attempt to produce Toray MABS resin "Toyolac" 910-X01-N.
Furthermore examination result of heavy metals contents such as lead, cadmium, mercury, and chromium is shown at table B.

Table A

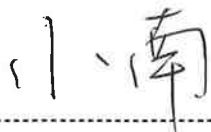
No	Name of Chemical Substance	No	Name of Chemical Substance
1	Lead and its compounds	4	Mercury and its compounds
2	Cadmium and its compounds	5	Polybromobiphenyl
3	Hexavalent chromium compounds	6	Polybromodiphenylether

Table B

	Name of Chemical Substance	Analysis result	Fixed quantity minimum
1	Lead content (ppm)	<2 ppm	Lead 2ppm
2	Cadmium content (ppm)	<2 ppm	Cadmium 2ppm
3	Chromium content (ppm)	<2 ppm	Chromium 2ppm
4	Mercury content (ppm)	<2 ppm	Mercury 2ppm

The details of data are indicated in the SCAS test report.

If you have any queries ,please feel free to contact us. Thank you.
Best regards.



Kazuhiko Kominami
Manager of Quality Assuaranse Section
Chiba Plant
Toray Industreis, Inc.



Test Report

No.: SZTYR060723730/LP

Date: JUL 14, 2006

Page 1 of 3

TORAY PLASTICS (SZ) LTD.
SHATOU JIAOTANG IND'L DISTRICT,
SHAJING BAOAN, SHENZHEN, P.R. CHINA (518104)

Report on the submitted samples said to be TOYOLAC 910 X01 N

SGS Ref No. : 060733037RS-11.11
Manufacturer : TORAY
Country of Origin : JAPAN
Sample Receiving Date : JUL 10, 2006
Testing Period : JUL 11, 2006 TO JUL 13, 2006

Test Requested : 1) Determination of Lead content in the submitted samples.
2) Determination of Cadmium content in the submitted samples.
3) Determination of Mercury content in the submitted samples.
4) Determination of Hexavalent Chromium content in the submitted samples.

Test Method : 1) With reference to EPA 3050B:1996 / Other acid digestion. Analysis was performed by Inductively Coupled Plasma Atomic Emission Spectrometer (ICP-AES).
2) With reference to EN 1122:2001 / Other acid digestion. Analysis was performed by Inductively Coupled Plasma Atomic Emission Spectrometer (ICP-AES).
3) With reference to EPA Method 3052: 1996 / other acid digestion. Analysis was performed by Inductively Coupled Plasma Atomic Emission Spectrometer (ICP-AES).
4) With reference to EPA Method 3060A: 1996 and then analyzed by colorimetric method 7196A: 1992.

Test Results : Please refer to next page(s).

Signed for and on behalf of
SGS-CSTC Ltd.

LI Ying, Susan
Section Manager

This Test Report is issued by the Company subject to its General Conditions of Service printed overleaf or attached. Said Conditions are also available upon request or are accessible at www.sgs.com. Attention is drawn to the limitations of liability, indemnification and jurisdictional policies defined therein. The results shown in this Test Report refer only to the sample(s) tested unless otherwise stated and such sample(s) are retained for 30 days only. This Test Report shall not be reproduced except in full, without written approval of the Company.



SGS-CSTC TESTING SERVICES Co., Ltd.

4/F, Oastar Building, Zhongkang Road, Shangmeilin, Shenzhen, China

t (86-755)83114358

f (86-755)83106190

www.cn.sgs.com
e sgs.china@sgs.com

SZL5 2 7 5 3 0

Member of the SGS Group (SGS SA)



Test Report

No.: SZTYR060723730/LP

Date: JUL 14, 2006

Page 2 of 3

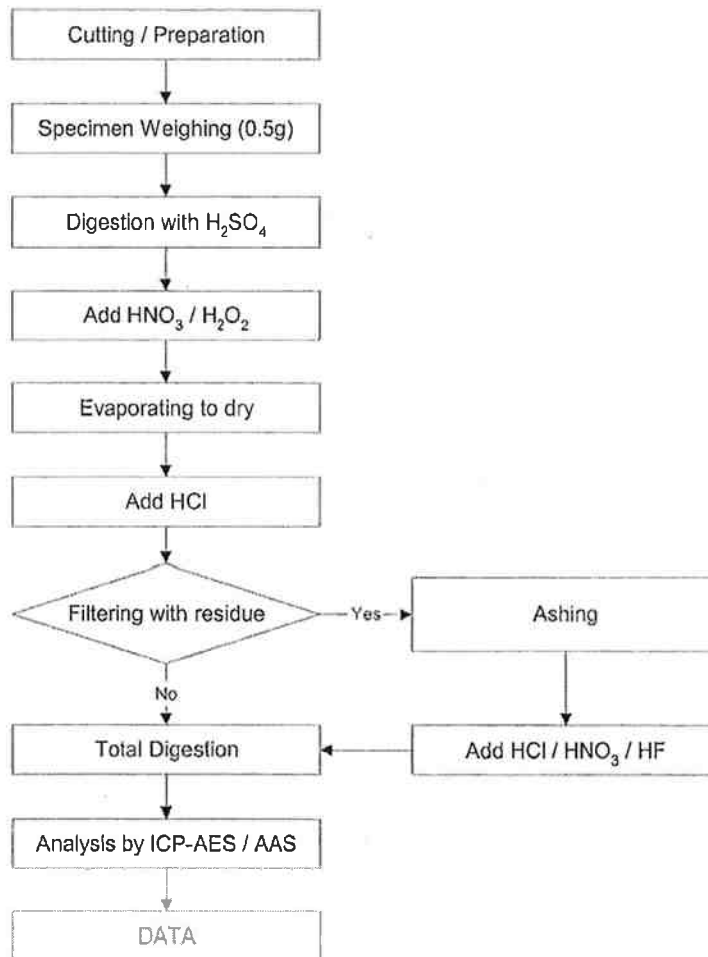
Test Results :

Element	<u>Transparent plastic grains</u>
1) Lead (Pb)	N.D.
2) Cadmium (Cd)	N.D.
3) Mercury (Hg)	N.D.
4) Hexavalent Chromium (Cr ⁶⁺)	N.D.

- Note :
- N.D. = Not detected (< 2ppm)
 - ppm = mg/kg
 - Results shown are of the total weight of dry samples.

Appendix:

1) Flow chart of digestion (Wet decomposition and ashing for Lead content in plastic sample)

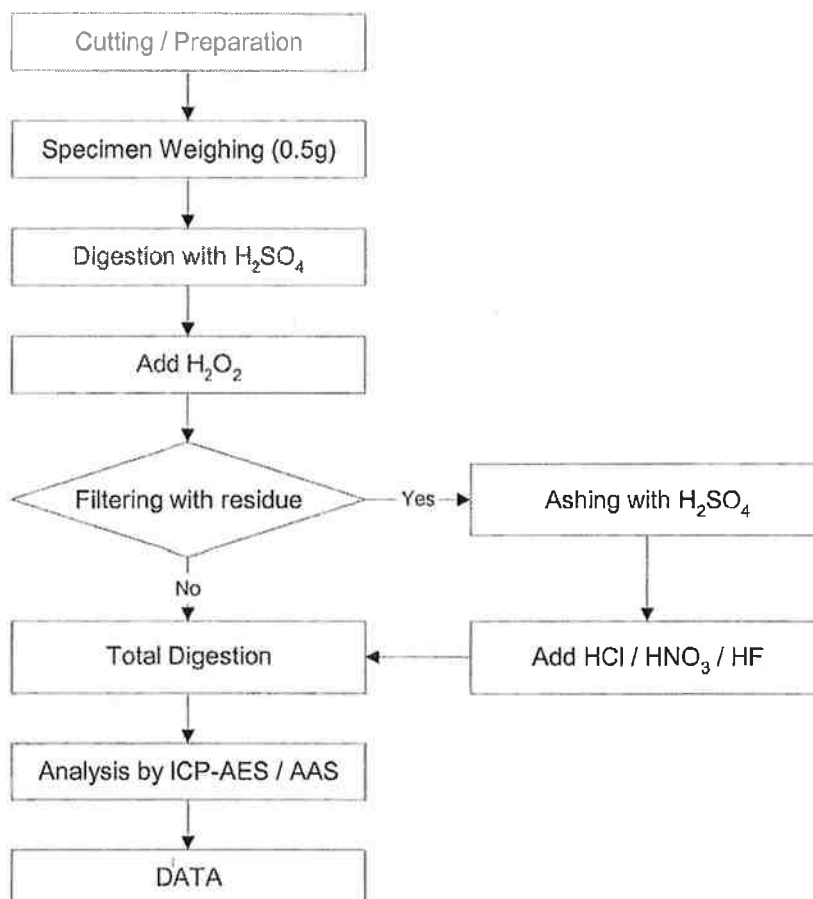


This Test Report is issued by the Company subject to its General Conditions of Service printed overleaf or attached. Said Conditions are also available upon request or are accessible at www.sgs.com. Attention is drawn to the limitations of liability, indemnification and jurisdictional policies defined therein. The results shown in this Test Report refer only to the sample(s) tested unless otherwise stated and such sample(s) are retained for 30 days only. This Test Report shall not be reproduced except in full, without written approval of the Company.



SZL527531

2) Flow chart of digestion (Wet decomposition and ashing for Cadmium content in plastic sample)



The submitted sample(s) were dissolved totally by pre-conditioning method according to above flow chart.

Operated by: Li Yong

Checked by: Susan Lee

*** End of Report ***

This Test Report is issued by the Company subject to its General Conditions of Service printed overleaf or attached. Said Conditions are also available upon request or are accessible at www.sgs.com. Attention is drawn to the limitations of liability, indemnification and jurisdictional policies defined therein. The results shown in this Test Report refer only to the sample(s) tested unless otherwise stated and such sample(s) are retained for 30 days only. This Test Report shall not be reproduced except in full, without written approval of the Company.



SZL5 2 7 5 3 2