

# Test Report

No. CRSSA/15799-1/17  
CRS Ref. CRSSA/17/3272/Toray

Date : 04/01/2018

Page: 1 of 5

**TORAY PLASTICS (M) SDN BHD**  
**2628, MK. 1, SPT., LORONG PERUSAHAAN 4**  
**PRAI FREE INDUSTRIAL ZONE**  
**13600 PRAI, PENANG, MALAYSIA**

**The following merchandise was (were) submitted and identified by the client as:**

Sample Description : TOYOLAC™ 900 352  
TOYOLAC™ 900 352A  
TOYOLAC™ 920 555  
Sample Receiving Date : 27/12/2017  
Testing Period : 27/12/2017 to 04/01/2018

---

Test Requested : Selected test(s) as requested by client  
Test Method : Please refer to next page(s).  
Test Results : Please refer to next page(s).  
Analysts : Tan Mei Ann & Ling Yii Ming

SGS (MALAYSIA) SDN. BHD.



TAY SIAM PINE  
B.Sc. (HONS) MMIC  
TECHNICAL MANAGER

This document is issued by the Company subject to its General Conditions of Service printed overleaf, available on request or accessible at <http://www.sgs.com/en/Terms-and-Conditions.aspx> and, for electronic format documents, subject to Terms and Conditions for Electronic Documents at <http://www.sgs.com/en/Terms-and-Conditions/Terms-e-Documents.aspx>. Attention is drawn to the limitation of liability, indemnification and jurisdiction issues defined therein. Any holder of this document is advised that information contained hereon reflects the Company's findings at the time of its intervention only and within the limits of Client's instructions, if any. The Company's sole responsibility is to its Client and this document does not exonerate parties to a transaction from exercising all their rights and obligations under the transaction documents. This document cannot be reproduced except in full, without prior written approval of the Company. Any unauthorized alteration, forgery or falsification of the content or appearance of this document is unlawful and offenders may be prosecuted to the fullest extent of the law. Unless otherwise stated the results shown in this test report refer only to the sample(s) tested and such sample(s) are retained for seven days (perishable food sample) or three months only.

# Test Report

No. CRSSA/15799-1/17  
CRS Ref. CRSSA/17/3272/Toray

Date : 04/01/2018

Page: 2 of 5

Test results:

Test Part Description :

Sample Description : TOYOLAC™ 900 352  
TOYOLAC™ 900 352A  
TOYOLAC™ 920 555

## RoHS Directive 2011/65/EU Annex II

Test Item(s):	Unit	Test Method	Results	MDL	Limit
Cadmium (Cd)	mg/kg	With reference to IEC 62321-5:2013 (Determination of Cd by ICP-OES)	N.D.	2	100
Lead (Pb)	mg/kg	With reference to IEC 62321-5:2013 (Determination of Pb by ICP-OES)	N.D.	2	1000
Mercury (Hg)	mg/kg	With reference to IEC 62321-4:2013/AMD 1:2017 (Determination of Hg by ICP-OES)	N.D.	2	1000
Hexavalent Chromium (CrVI)	mg/kg	With reference to IEC 62321-7-2:2017 (Determination of CrVI by UV-Vis)	N.D.	8	1000
<b>Sum of PBBs</b>	mg/kg	With reference to IEC 62321-6:2015 (Determination of PBB by GC-MS)	N.D.	-	1000
Monobromobiphenyl	mg/kg	With reference to IEC 62321-6:2015 (Determination of PBB by GC-MS)	N.D.	5	-
Dibromobiphenyl	mg/kg	With reference to IEC 62321-6:2015 (Determination of PBB by GC-MS)	N.D.	5	-
Tribromobiphenyl	mg/kg	With reference to IEC 62321-6:2015 (Determination of PBB by GC-MS)	N.D.	5	-
Tetrabromobiphenyl	mg/kg	With reference to IEC 62321-6:2015 (Determination of PBB by GC-MS)	N.D.	5	-
Pentabromobiphenyl	mg/kg	With reference to IEC 62321-6:2015 (Determination of PBB by GC-MS)	N.D.	5	-
Hexabromobiphenyl	mg/kg	With reference to IEC 62321-6:2015 (Determination of PBB by GC-MS)	N.D.	5	-
Heptabromobiphenyl	mg/kg	With reference to IEC 62321-6:2015 (Determination of PBB by GC-MS)	N.D.	5	-
Octabromobiphenyl	mg/kg	With reference to IEC 62321-6:2015 (Determination of PBB by GC-MS)	N.D.	5	-
Nonabromobiphenyl	mg/kg	With reference to IEC 62321-6:2015 (Determination of PBB by GC-MS)	N.D.	5	-
Decabromobiphenyl	mg/kg	With reference to IEC 62321-6:2015 (Determination of PBB by GC-MS)	N.D.	5	-

SGS (MALAYSIA) SDN. BHD.



TAY SIAM PINE  
B.Sc. (HONS) MMIC  
TECHNICAL MANAGER

This document is issued by the Company subject to its General Conditions of Service printed overleaf, available on request or accessible at <http://www.sgs.com/en/Terms-and-Conditions.aspx> and, for electronic format documents, subject to Terms and Conditions for Electronic Documents at <http://www.sgs.com/en/Terms-and-Conditions/Terms-e-Documents.aspx>. Attention is drawn to the limitation of liability, indemnification and jurisdiction issues defined therein. Any holder of this document is advised that information contained hereon reflects the Company's findings at the time of its intervention only and within the limits of Client's instructions, if any. The Company's sole responsibility is to its Client and this document does not exonerate parties to a transaction from exercising all their rights and obligations under the transaction documents. This document cannot be reproduced except in full, without prior written approval of the Company. Any unauthorized alteration, forgery or falsification of the content or appearance of this document is unlawful and offenders may be prosecuted to the fullest extent of the law. Unless otherwise stated the results shown in this test report refer only to the sample(s) tested and such sample(s) are retained for seven days (perishable food sample) or three months only.

# Test Report

No. CRSSA/15799-1/17  
CRS Ref. CRSSA/17/3272/Toray

Date : 04/01/2018

Page: 3 of 5

<b>Sum of PBDEs</b>	mg/kg	With reference to IEC 62321-6:2015 (Determination of PBDE by GC-MS)	N.D.	-	1000
Monobromodiphenyl ether	mg/kg	With reference to IEC 62321-6:2015 (Determination of PBDE by GC-MS)	N.D.	5	-
Dibromodiphenyl ether	mg/kg	With reference to IEC 62321-6:2015 (Determination of PBDE by GC-MS)	N.D.	5	-
Tribromodiphenyl ether	mg/kg	With reference to IEC 62321-6:2015 (Determination of PBDE by GC-MS)	N.D.	5	-
Tetrabromodiphenyl ether	mg/kg	With reference to IEC 62321-6:2015 (Determination of PBDE by GC-MS)	N.D.	5	-
Pentabromodiphenyl ether	mg/kg	With reference to IEC 62321-6:2015 (Determination of PBDE by GC-MS)	N.D.	5	-
Hexabromodiphenyl ether	mg/kg	With reference to IEC 62321-6:2015 (Determination of PBDE by GC-MS)	N.D.	5	-
Heptabromodiphenyl ether	mg/kg	With reference to IEC 62321-6:2015 (Determination of PBDE by GC-MS)	N.D.	5	-
Octabromodiphenyl ether	mg/kg	With reference to IEC 62321-6:2015 (Determination of PBDE by GC-MS)	N.D.	5	-
Nonabromodiphenyl ether	mg/kg	With reference to IEC 62321-6:2015 (Determination of PBDE by GC-MS)	N.D.	5	-
Decabromodiphenyl ether	mg/kg	With reference to IEC 62321-6:2015 (Determination of PBDE by GC-MS)	N.D.	5	-

Note : (a) mg/kg = ppm ; (0.1wt% = 1000ppm)

(b) N.D. = Not Detected

(c) MDL = Method Detection Limit

(d) - = not regulated

(e) The below information of raw materials or ingredients was provided by the client. SGS has no liability in verifying the authenticity of such information. The testing was carried out using the sample submitted as shown in the photo in page 4.

SGS (MALAYSIA) SDN. BHD.



TAY SIAM PINE  
B.Sc. (HONS) MMIC  
TECHNICAL MANAGER

This document is issued by the Company subject to its General Conditions of Service printed overleaf, available on request or accessible at <http://www.sgs.com/en/Terms-and-Conditions.aspx> and, for electronic format documents, subject to Terms and Conditions for Electronic Documents at <http://www.sgs.com/en/Terms-and-Conditions/Terms-e-Documents.aspx>. Attention is drawn to the limitation of liability, indemnification and jurisdiction issues defined therein. Any holder of this document is advised that information contained hereon reflects the Company's findings at the time of its intervention only and within the limits of Client's instructions, if any. The Company's sole responsibility is to its Client and this document does not exonerate parties to a transaction from exercising all their rights and obligations under the transaction documents. This document cannot be reproduced except in full, without prior written approval of the Company. Any unauthorized alteration, forgery or falsification of the content or appearance of this document is unlawful and offenders may be prosecuted to the fullest extent of the law. Unless otherwise stated the results shown in this test report refer only to the sample(s) tested and such sample(s) are retained for seven days (perishable food sample) or three months only.

SGS (Malaysia) Sdn. Bhd.  
(Company No. 10871-T)

Lot 4, Persiaran Jubli Perak, Seksyen 22, 40300 Shah Alam, Selangor, Malaysia  
t +6 (03) 5481 8282 f +6 (03) 5481 8215 www.sgs.com

## Test Report

No. CRSSA/15799-1/17  
CRS Ref. CRSSA/17/3272/Toray

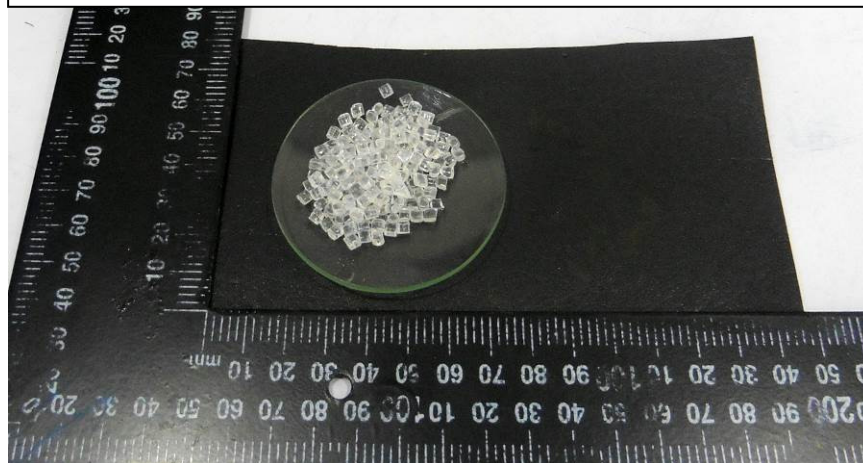
Date : 04/01/2018

Page: 4 of 5

### Test Part Description :

Sample Description : TOYOLAC™ 900 352  
TOYOLAC™ 900 352A  
TOYOLAC™ 920 555

**TORAY PLASTICS (M) SDN BHD**  
**CRSSA/15799-1/17**



SGS authenticate the photo on original report only

SGS (MALAYSIA) SDN. BHD.

TAY SIAM PINE  
B.Sc. (HONS) MMIC  
TECHNICAL MANAGER

This document is issued by the Company subject to its General Conditions of Service printed overleaf, available on request or accessible at <http://www.sgs.com/en/Terms-and-Conditions.aspx> and, for electronic format documents, subject to Terms and Conditions for Electronic Documents at <http://www.sgs.com/en/Terms-and-Conditions/Terms-e-Documents.aspx>. Attention is drawn to the limitation of liability, indemnification and jurisdiction issues defined therein. Any holder of this document is advised that information contained hereon reflects the Company's findings at the time of its intervention only and within the limits of Client's instructions, if any. The Company's sole responsibility is to its Client and this document does not exonerate parties to a transaction from exercising all their rights and obligations under the transaction documents. This document cannot be reproduced except in full, without prior written approval of the Company. Any unauthorized alteration, forgery or falsification of the content or appearance of this document is unlawful and offenders may be prosecuted to the fullest extent of the law. Unless otherwise stated the results shown in this test report refer only to the sample(s) tested and such sample(s) are retained for seven days (perishable food sample) or three months only.

<p><b>1. DETERMINATION OF CADMIUM CONTENT BY IEC 62321-5 2013</b></p> <p>Sample Receiving and Registration ↓ Cut sample in small pieces ↓ Weight sample (0.2-0.5g) into digestion vessel ↓ Acid digestion (Microwave) ↓ "Totally Dissolved" ↓ Filtration ↓ Analyses by ICP</p>	<p><b>2. DETERMINATION OF LEAD CONTENT BY IEC 62321-5 2013</b></p> <p>Sample Receiving and Registration ↓ Cut sample in small pieces ↓ Weight sample (0.2-0.5g) into digestion vessel ↓ Acid digestion (Microwave) ↓ "Totally Dissolved" ↓ Filtration ↓ Analyses by ICP</p>
<p><b>3. DETERMINATION OF MERCURY CONTENT BY IEC 62321-4 2013/AMD 1 2017</b></p> <p>Sample Receiving and Registration ↓ Cut sample in small pieces ↓ Weight sample (0.1-0.5g) into digestion vessel ↓ Acid digestion (Microwave) ↓ "Totally Dissolved" ↓ Filtration ↓ Analyses by ICP</p>	<p><b>4a. DETERMINATION OF HEXAVALENT CHROMIUM BY IEC 62321-7-2 2017 (Other Materials)</b></p> <p>Sample Preparation ↓ Digestion at 150~160°C ↓ Separating To Obtain Aqueous Phase ↓ pH Adjustment ↓ Add Diphenyl-Carbazide for Color Development ↓ Analyses by UV- Spectrophotometer (540 nm)</p>
<p><b>4b. DETERMINATION OF HEXAVALENT CHROMIUM BY IEC 62321-7-2 2017 (Soluble Polymers)</b></p> <p>Sample Preparation ↓ Add Digestion Solution ↓ Ultrasonicate Sample ↓ pH Adjustment ↓ Add Diphenyl-Carbazide for Color Development ↓ Analyses by UV- Spectrophotometer (540 nm)</p>	<p><b>5. DETERMINATION OF PBB/PBDE WITH GC-MS BY IEC 62321-6 2015</b></p> <p>Cut sample in small pieces ↓ Weight sample (0.5-4.0g) into extraction thimble ↓ Soxhlet Extraction with Toluene ↓ Filter through 0.45 um membrane filter ↓ Analyses by GC-MS (with appropriate dilution)</p>

SGS (MALAYSIA) SDN. BHD.

\*\*\*\*End of Report\*\*\*\*



TAY SIAM PINE  
B.Sc. (HONS) MMIC  
TECHNICAL MANAGER

This document is issued by the Company subject to its General Conditions of Service printed overleaf, available on request or accessible at <http://www.sgs.com/en/Terms-and-Conditions.aspx> and, for electronic format documents, subject to Terms and Conditions for Electronic Documents at <http://www.sgs.com/en/Terms-and-Conditions/Terms-e-Documents.aspx>. Attention is drawn to the limitation of liability, indemnification and jurisdiction issues defined therein. Any holder of this document is advised that information contained hereon reflects the Company's findings at the time of its intervention only and within the limits of Client's instructions, if any. The Company's sole responsibility is to its Client and this document does not exonerate parties to a transaction from exercising all their rights and obligations under the transaction documents. This document cannot be reproduced except in full, without prior written approval of the Company. Any unauthorized alteration, forgery or falsification of the content or appearance of this document is unlawful and offenders may be prosecuted to the fullest extent of the law. Unless otherwise stated the results shown in this test report refer only to the sample(s) tested and such sample(s) are retained for seven days (perishable food sample) or three months only.

# Test Report

No. CRSSA/15799-2/17  
CRS Ref. CRSSA/17/3272/Toray

Date : 05/01/2018

Page: 1 of 4

**TORAY PLASTICS (M) SDN BHD**  
**2628, MK. 1, SPT., LORONG PERUSAHAAN 4**  
**PRAI FREE INDUSTRIAL ZONE**  
**13600 PRAI, PENANG, MALAYSIA**

**The following merchandise was (were) submitted and identified by the client as:**

Sample Description : TOYOLAC™ 900 352  
TOYOLAC™ 900 352A  
TOYOLAC™ 920 555  
Sample Receiving Date : 27/12/2017  
Testing Period : 27/12/2017 to 05/01/2018

---

Test Requested : Selected test(s) as requested by client  
Test Method : Please refer to next page(s).  
Test Results : Please refer to next page(s).  
Analyst : Ling Yii Ming

SGS (MALAYSIA) SDN. BHD.



TAY SIAM PINE  
B.Sc. (HONS) MMIC  
TECHNICAL MANAGER

This document is issued by the Company subject to its General Conditions of Service printed overleaf, available on request or accessible at <http://www.sgs.com/en/Terms-and-Conditions.aspx> and, for electronic format documents, subject to Terms and Conditions for Electronic Documents at <http://www.sgs.com/en/Terms-and-Conditions/Terms-e-Documents.aspx>. Attention is drawn to the limitation of liability, indemnification and jurisdiction issues defined therein. Any holder of this document is advised that information contained hereon reflects the Company's findings at the time of its intervention only and within the limits of Client's instructions, if any. The Company's sole responsibility is to its Client and this document does not exonerate parties to a transaction from exercising all their rights and obligations under the transaction documents. This document cannot be reproduced except in full, without prior written approval of the Company. Any unauthorized alteration, forgery or falsification of the content or appearance of this document is unlawful and offenders may be prosecuted to the fullest extent of the law. Unless otherwise stated the results shown in this test report refer only to the sample(s) tested and such sample(s) are retained for seven days (perishable food sample) or three months only.

# Test Report

No. CRSSA/15799-2/17  
CRS Ref. CRSSA/17/3272/Toray

Date : 05/01/2018

Page: 2 of 4

Test result:

Test Part Description :

Sample Description : TOYOLAC™ 900 352  
TOYOLAC™ 900 352A  
TOYOLAC™ 920 555

**RoHS Directive 2011/65/EU Annex II (amended by Directive (EU) 2015/863)**

Test Item(s):	Unit	Test Method	Results	MDL	Limit
Bis (2-ethylhexyl) phthalate (DEHP) (CAS No. 117-81-7)	mg/kg	With reference to IEC 62321-8:2017. Analysis was performed by GC/MS.	N.D.	50	1000
Butyl benzyl phthalate (BBP) (CAS No. 85-68-7)	mg/kg	With reference to IEC 62321-8:2017. Analysis was performed by GC/MS.	N.D.	50	1000
Dibutyl phthalate (DBP) (CAS No. 84-74-2)	mg/kg	With reference to IEC 62321-8:2017. Analysis was performed by GC/MS.	N.D.	50	1000
Diisobutyl phthalate (DIBP) (CAS No. 84-69-5)	mg/kg	With reference to IEC 62321-8:2017. Analysis was performed by GC/MS.	N.D.	50	1000

- Note :
- (a) mg/kg = ppm ; (0.1wt% = 1000ppm)
  - (b) N.D. = Not Detected
  - (c) MDL = Method Detection Limit
  - (d) - = Not regulated
  - (e) On 4 June 2015, [Commission Directive \(EU\) 2015/863](http://eur-lex.europa.eu/legal-content/EN/TXT/?uri=CELEX:32015L0863) was published in the Official Journal of the European Union (OJEU) to include the phthalates BBP, DBP, DEHP and DIBP into ANNEX II of the Rohs Recast Directive. The new law restricts each phthalate to no more than 0.1% in each homogeneous material of an electrical product.
  - (f) The restriction of DEHP, BBP, DBP and DIBP shall apply to medical devices, including in vitro medical devices, and monitoring and control instruments, including industrial monitoring and control instruments, from 22 July 2021.
  - (g) The restriction of DEHP, BBP, DBP and DIBP shall not apply to cables or spare parts for the repair, the reuse, the updating of functionalities or upgrading of capacity of EEE placed on the market before 22 July 2019, and of medical devices, including in vitro medical devices, and monitoring and control instruments, including industrial monitoring and control instruments, placed on the market before 22 July 2021.
  - (h) The restriction of DEHP, BBP and DBP shall not apply to toys which are already subject to the restriction of DEHP, BBP and DBP through entry 51 of Annex XVII to Regulation (EC) No 1907/2006.
  - (i) The below information of raw materials or ingredients was provided by the client. SGS has no liability in verifying the authenticity of such information. The testing was carried out using the sample submitted as shown in the photo in page 3.

SGS (MALAYSIA) SDN. BHD.



TAY SIAM PINE  
B.Sc. (HONS) MMIC  
TECHNICAL MANAGER

This document is issued by the Company subject to its General Conditions of Service printed overleaf, available on request or accessible at <http://www.sgs.com/en/Terms-and-Conditions.aspx> and, for electronic format documents, subject to Terms and Conditions for Electronic Documents at <http://www.sgs.com/en/Terms-and-Conditions/Terms-e-Documents.aspx>. Attention is drawn to the limitation of liability, indemnification and jurisdiction issues defined therein. Any holder of this document is advised that information contained hereon reflects the Company's findings at the time of its intervention only and within the limits of Client's instructions, if any. The Company's sole responsibility is to its Client and this document does not exonerate parties to a transaction from exercising all their rights and obligations under the transaction documents. This document cannot be reproduced except in full, without prior written approval of the Company. Any unauthorized alteration, forgery or falsification of the content or appearance of this document is unlawful and offenders may be prosecuted to the fullest extent of the law. Unless otherwise stated the results shown in this test report refer only to the sample(s) tested and such sample(s) are retained for seven days (perishable food sample) or three months only.



## Test Report

No. CRSSA/15799-2/17  
CRS Ref. CRSSA/17/3272/Toray

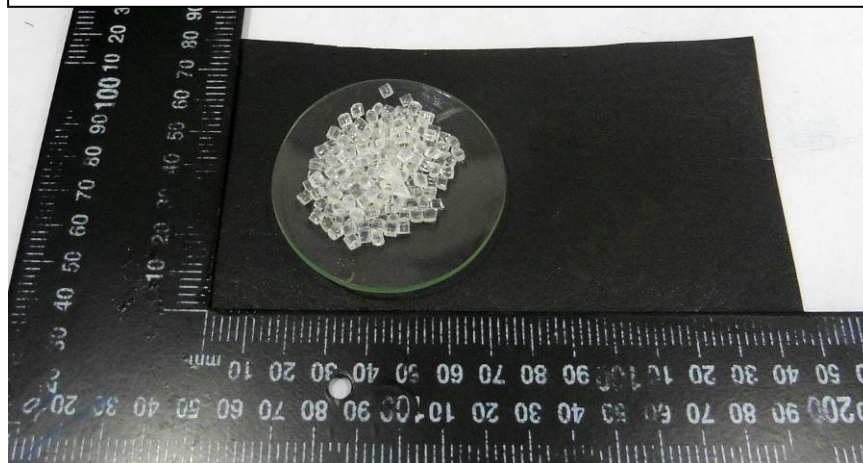
Date : 05/01/2018

Page: 3 of 4

### Test Part Description :

Sample Description : TOYOLAC™ 900 352  
TOYOLAC™ 900 352A  
TOYOLAC™ 920 555

**TORAY PLASTICS (M) SDN BHD**  
**CRSSA/15799-2/17**



SGS authenticate the photo on original report only

SGS (MALAYSIA) SDN. BHD.

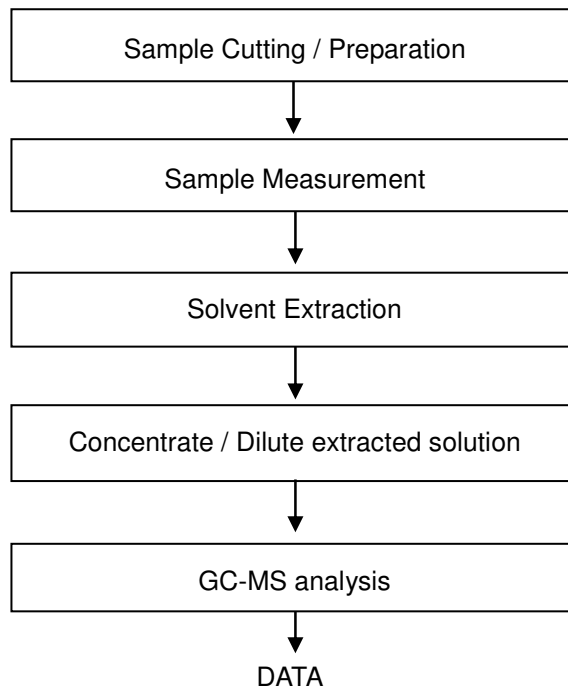
TAY SIAM PINE  
B.Sc. (HONS) MMIC  
TECHNICAL MANAGER

This document is issued by the Company subject to its General Conditions of Service printed overleaf, available on request or accessible at <http://www.sgs.com/en/Terms-and-Conditions.aspx> and, for electronic format documents, subject to Terms and Conditions for Electronic Documents at <http://www.sgs.com/en/Terms-and-Conditions/Terms-e-Documents.aspx>. Attention is drawn to the limitation of liability, indemnification and jurisdiction issues defined therein. Any holder of this document is advised that information contained hereon reflects the Company's findings at the time of its intervention only and within the limits of Client's instructions, if any. The Company's sole responsibility is to its Client and this document does not exonerate parties to a transaction from exercising all their rights and obligations under the transaction documents. This document cannot be reproduced except in full, without prior written approval of the Company. Any unauthorized alteration, forgery or falsification of the content or appearance of this document is unlawful and offenders may be prosecuted to the fullest extent of the law. Unless otherwise stated the results shown in this test report refer only to the sample(s) tested and such sample(s) are retained for seven days (perishable food sample) or three months only.



### Flowchart for Phthalates Measurement

Method: IEC62321



\*\*\*\*End of Report\*\*\*\*

SGS (MALAYSIA) SDN. BHD.

TAY SIAM PINE  
B.Sc. (HONS) MMIC  
TECHNICAL MANAGER

This document is issued by the Company subject to its General Conditions of Service printed overleaf, available on request or accessible at <http://www.sgs.com/en/Terms-and-Conditions.aspx> and, for electronic format documents, subject to Terms and Conditions for Electronic Documents at <http://www.sgs.com/en/Terms-and-Conditions/Terms-e-Documents.aspx>. Attention is drawn to the limitation of liability, indemnification and jurisdiction issues defined therein. Any holder of this document is advised that information contained hereon reflects the Company's findings at the time of its intervention only and within the limits of Client's instructions, if any. The Company's sole responsibility is to its Client and this document does not exonerate parties to a transaction from exercising all their rights and obligations under the transaction documents. This document cannot be reproduced except in full, without prior written approval of the Company. Any unauthorized alteration, forgery or falsification of the content or appearance of this document is unlawful and offenders may be prosecuted to the fullest extent of the law. Unless otherwise stated the results shown in this test report refer only to the sample(s) tested and such sample(s) are retained for seven days (perishable food sample) or three months only.